



Economic Overview

Central WIOA



Demographic Profile.....	3
Employment Trends	5
Unemployment Rate	5
Wage Trends	6
Cost of Living Index	7
Industry Snapshot	8
Occupation Snapshot	10
Industry Clusters	12
Education Levels.....	13
Gross Domestic Product.....	14
Central WIOA Regional Map	16
Region Definition.....	17
FAQ.....	18

Demographic Profile

The population in the Central WIOA was 1,472,574 per American Community Survey data for 2018-2022.

The region has a civilian labor force of 727,909 with a participation rate of 62.2%. Of individuals 25 to 64 in the Central WIOA, 35.4% have a bachelor's degree or higher which compares with 36.5% in the nation.

The median household income in the Central WIOA is \$68,035 and the median house value is \$230,885.

Summary¹

	Percent			Value		
	Central WIOA	South Carolina	USA	Central WIOA	South Carolina	USA
Demographics						
Population (ACS)	—	—	—	1,472,574	5,212,774	332,387,540
Male	48.4%	48.7%	49.5%	712,795	2,537,456	164,545,087
Female	51.6%	51.3%	50.5%	759,779	2,675,318	167,842,453
Median Age ²	—	—	—	38.8	40.1	38.7
Under 18 Years	22.3%	21.6%	22.2%	328,558	1,127,062	73,645,238
18 to 24 Years	9.9%	9.1%	9.1%	145,561	475,338	30,307,641
25 to 34 Years	12.9%	12.9%	13.7%	189,710	671,642	45,497,632
35 to 44 Years	12.9%	12.4%	13.1%	189,540	647,392	43,492,887
45 to 54 Years	12.4%	12.2%	12.3%	182,743	634,490	40,847,713
55 to 64 Years	12.8%	13.3%	12.8%	188,663	693,281	42,626,382
65 to 74 Years	10.3%	11.3%	10.0%	152,100	589,960	33,293,127
75 Years and Over	6.5%	7.2%	6.8%	95,699	373,609	22,676,920
Race: White	58.4%	64.1%	63.4%	859,380	3,339,447	210,875,446
Race: Black or African American	31.3%	25.3%	12.4%	460,613	1,318,630	41,070,890
Race: American Indian and Alaska Native	0.3%	0.3%	0.9%	4,166	16,823	2,924,996
Race: Asian	2.2%	1.7%	5.8%	32,276	89,723	19,352,659
Race: Native Hawaiian and Other Pacific Islander	0.0%	0.1%	0.2%	735	3,642	629,292
Race: Some Other Race	2.1%	2.7%	6.6%	31,215	142,798	21,940,536
Race: Two or More Races	5.7%	5.8%	10.7%	84,189	301,711	35,593,721
Hispanic or Latino (of any race)	6.4%	7.1%	19.0%	94,137	368,900	63,131,589
Population Growth						
Population (Pop Estimates) ⁴	—	—	—	1,508,775	5,373,555	334,914,895
Population Annual Average Growth ⁴	1.0%	1.2%	0.6%	14,611	60,709	1,885,495
People per Square Mile ⁴	—	—	—	191.9	178.7	94.8
Economic						
Labor Force Participation Rate and Size (civilian population 16 years and over)	62.2%	60.2%	63.3%	727,909	2,513,298	168,567,852
Prime-Age Labor Force Participation Rate and Size (civilian population 25-54)	82.5%	81.6%	83.0%	458,599	1,577,860	107,055,165
Work from Home	11.1%	10.0%	13.5%	76,107	237,424	21,267,373
Armed Forces Labor Force	1.0%	0.9%	0.5%	12,086	39,412	1,287,774
Veterans, Age 18-64	6.2%	5.8%	4.2%	55,236	180,043	8,410,268
Veterans Labor Force Participation Rate and Size, Age 18-64	73.0%	74.3%	77.0%	40,341	133,696	6,478,181
Median Household Income ²	—	—	—	\$68,035	\$66,818	\$78,538
Per Capita Income	—	—	—	\$37,634	\$37,993	\$43,289
Mean Commute Time (minutes)	—	—	—	26.0	25.6	26.6
Commute via Public Transportation	0.5%	0.4%	3.5%	3,357	10,086	5,528,841
Educational Attainment, Age 25-64						
No High School Diploma	8.7%	9.6%	10.0%	65,492	254,842	17,176,172
High School Graduate	25.2%	27.4%	25.0%	189,086	724,281	43,057,491
Some College, No Degree	20.4%	20.2%	19.3%	153,368	534,191	33,315,654

Summary¹

	Percent			Value		
	Central WIOA	South Carolina	USA	Central WIOA	South Carolina	USA
Associate's Degree	10.3%	10.5%	9.2%	76,963	276,602	15,894,085
Bachelor's Degree	21.9%	20.6%	22.8%	164,609	544,605	39,256,774
Postgraduate Degree	13.5%	11.8%	13.8%	101,138	312,284	23,764,438
Housing						
Total Housing Units	—	—	—	650,253	2,401,638	142,332,876
Median House Value (of owner-occupied units) ^{2,5}	—	—	—	\$230,885	\$236,700	\$303,400
Homeowner Vacancy	0.9%	1.0%	1.0%	3,712	15,717	850,724
Rental Vacancy	5.1%	8.3%	5.5%	9,166	54,196	2,605,688
Renter-Occupied Housing Units (% of Occupied Units)	28.8%	28.6%	35.0%	167,506	591,532	44,590,828
Owner-Occupied Housing Units (% of Occupied Units)	71.2%	71.4%	65.0%	414,589	1,478,858	82,892,037
Occupied Housing Units with No Vehicle Available (% of Occupied Units)	5.7%	5.7%	8.3%	33,187	117,832	10,602,826
Social						
Poverty Level (of all people)	14.2%	14.2%	12.4%	202,140	719,720	40,390,045
Households Receiving Food Stamps/SNAP	11.0%	10.5%	11.8%	63,895	217,015	15,004,950
Enrolled in Grade 12 (% of total population)	1.3%	1.2%	1.3%	18,506	64,573	4,405,676
Disconnected Youth ³	2.8%	2.9%	2.4%	2,309	8,046	420,352
Children in Single Parent Families (% of all children)	39.1%	38.4%	34.0%	120,231	404,096	23,701,745
Uninsured	8.9%	10.0%	8.6%	128,324	510,757	28,000,876
With a Disability, Age 18-64	11.6%	12.0%	10.7%	100,850	366,706	21,269,700
With a Disability, Age 18-64, Labor Force Participation Rate and Size	44.1%	42.6%	47.0%	44,522	156,318	10,001,264
Foreign Born	5.3%	5.6%	13.9%	78,599	293,556	46,108,901
Speak English Less Than Very Well (population 5 yrs and over)	2.5%	3.0%	8.4%	35,181	150,169	26,299,012

Source: [JobsEQ®](#)

1. American Community Survey 2019-2023, unless noted otherwise

2. Median values for certain aggregate regions (such as MSAs) may be estimated as the weighted averages of the median values from the composing counties.

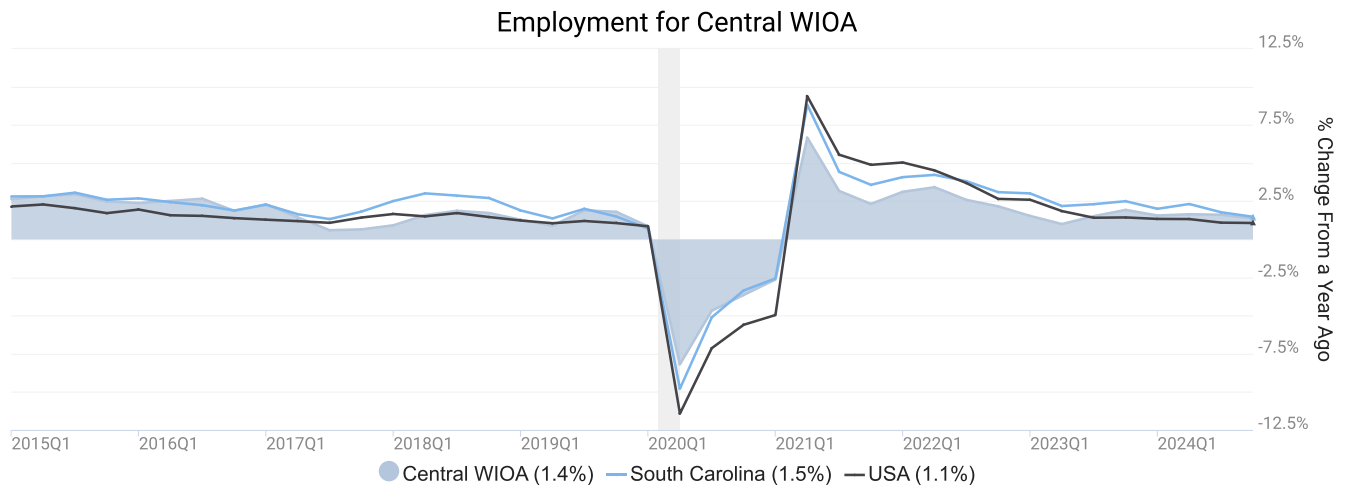
3. Disconnected Youth are 16-19 year olds who are (1) not in school, (2) not high school graduates, and (3) either unemployed or not in the labor force.

4. Census Population Estimate for 2023, annual average growth rate since 2013.

5. The Census's method for calculating median house values changed with the 2022 data set, so pre-2022 values are not directly comparable with later data.

Employment Trends

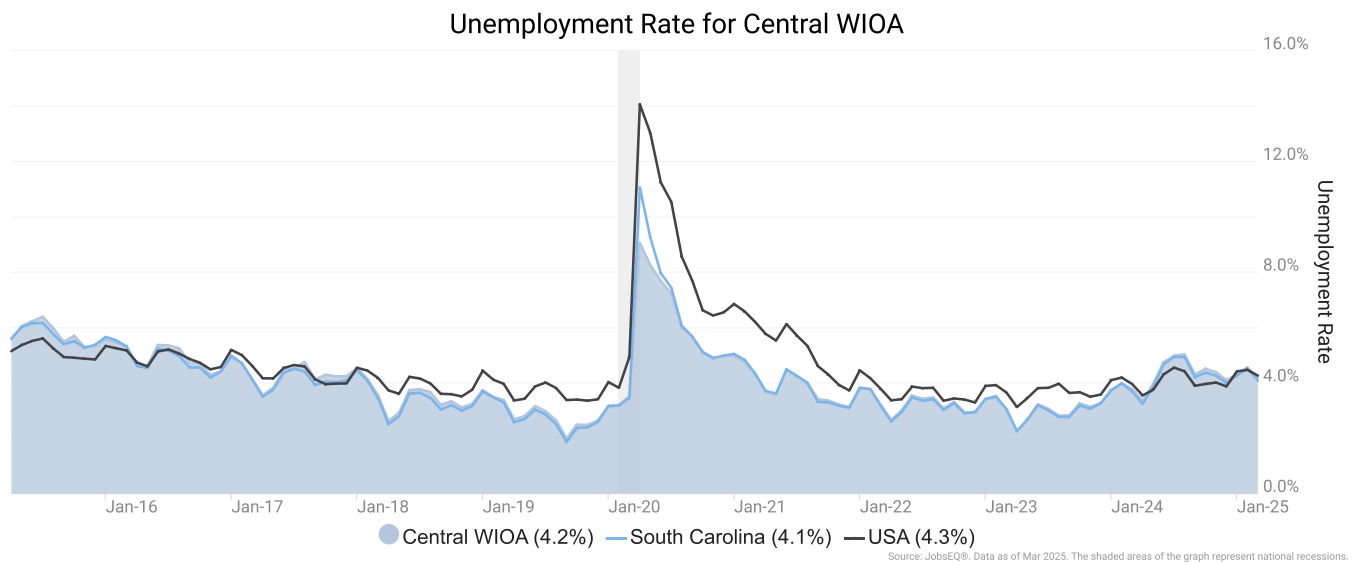
As of 2024Q4, total employment for the Central WIOA was 667,564 (based on a four-quarter moving average). Over the year ending 2024Q4, employment increased 1.4% in the region.



Employment data are derived from the Quarterly Census of Employment and Wages, provided by the Bureau of Labor Statistics and imputed where necessary. Data are updated through 2024Q3 with preliminary estimates updated to 2024Q4.

Unemployment Rate

The unemployment rate for the Central WIOA was 4.2% as of March 2025. The regional unemployment rate was lower than the national rate of 4.3%. One year earlier, in March 2024, the unemployment rate in the Central WIOA was 3.8%.

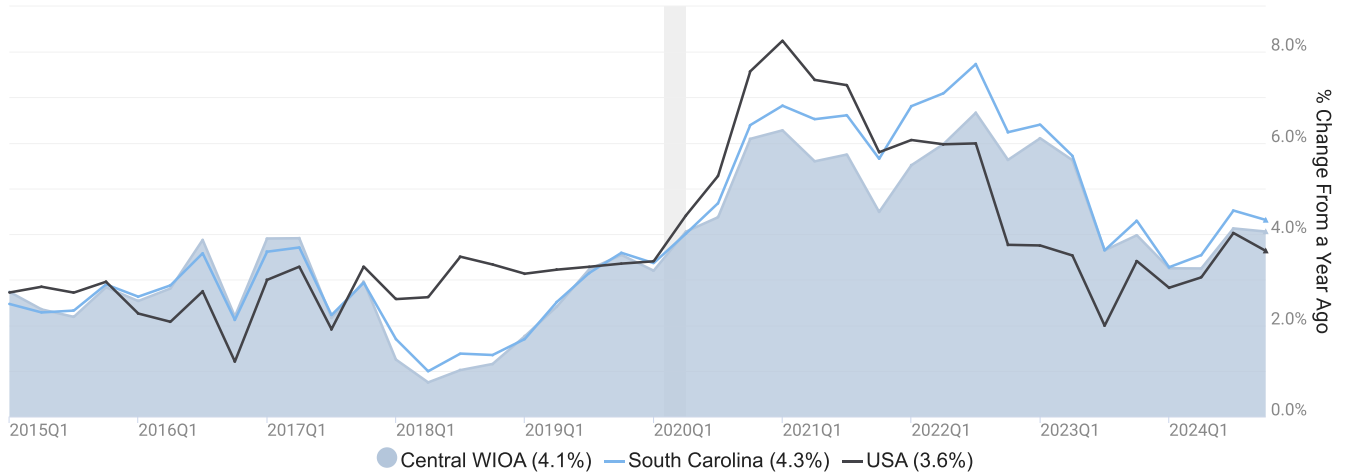


Unemployment rate data are from the Local Area Unemployment Statistics, provided by the Bureau of Labor Statistics and updated through March 2025.

Wage Trends

The average worker in the Central WIOA earned annual wages of \$58,260 as of 2024Q4. Average annual wages per worker increased 4.1% in the region over the preceding four quarters. For comparison purposes, annual average wages were \$73,145 in the nation as of 2024Q4.

Average Annual Wages for Central WIOA



Annual average wages per worker data are derived from the Quarterly Census of Employment and Wages, provided by the Bureau of Labor Statistics and imputed where necessary. Data are updated through 2024Q3 with preliminary estimates updated to 2024Q4.

Cost of Living Index

The Cost of Living Index estimates the relative price levels for consumer goods and services. When applied to wages and salaries, the result is a measure of relative purchasing power. The cost of living is 9.9% lower in Central WIOA than the U.S. average.

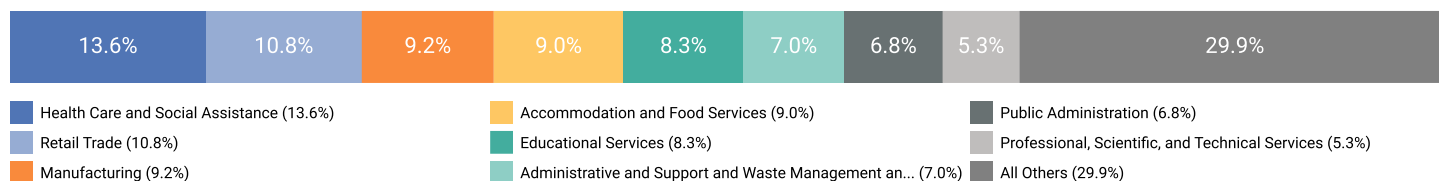
Cost of Living Information			
	Annual Average Salary	Cost of Living Index (Base US)	US Purchasing Power
Central WIOA	\$58,260	90.1	\$64,678
South Carolina	\$58,950	92.8	\$63,558
USA	\$73,145	100.0	\$73,145

Source: [JobsEQ®](#)
Data as of 2024Q4
Cost of Living per [COLI](#), data as of 2024Q3, imputed by Chmura where necessary.

Industry Snapshot

The largest sector in the Central WIOA is Health Care and Social Assistance, employing 90,756 workers. The next-largest sectors in the region are Retail Trade (72,256 workers) and Manufacturing (61,237). High location quotients (LQs) indicate sectors in which a region has high concentrations of employment compared to the national average. The sectors with the largest LQs in the region are Utilities (LQ = 1.51), Public Administration (1.44), and Finance and Insurance (1.18).

Total Workers for Central WIOA by Industry



Source: JobsEQ®
Data as of 2024Q4

Note: Figures may not sum due to rounding.

Employment data are derived from the Quarterly Census of Employment and Wages, provided by the Bureau of Labor Statistics and imputed where necessary. Data are updated through 2024Q3 with preliminary estimates updated to 2024Q4.

Sectors in the Central WIOA with the highest average wages per worker are Management of Companies and Enterprises (\$109,156), Utilities (\$107,199), and Professional, Scientific, and Technical Services (\$90,201). Regional sectors with the best job growth (or most moderate job losses) over the last 5 years are Health Care and Social Assistance (+9,267 jobs), Professional, Scientific, and Technical Services (+6,157), and Transportation and Warehousing (+4,080).

Over the next 1 year, employment in the Central WIOA is projected to expand by 5,853 jobs. The fastest growing sector in the region is expected to be Mining, Quarrying, and Oil and Gas Extraction with a +2.0% year-over-year rate of growth. The strongest forecast by number of jobs over this period is expected for Health Care and Social Assistance (+1,229 jobs), Accommodation and Food Services (+585), and Professional, Scientific, and Technical Services (+495).

Central WIOA, 2024Q4¹

NAICS	Industry	Empl	Current	5-Year History			1-Year Forecast				
			Avg Ann Wages	LQ	Empl Change	Ann %	Total Demand	Exits	Transfers	Empl Growth	Ann % Growth
62	Health Care and Social Assistance	90,756	\$60,345	0.90	9,267	2.2%	10,104	4,046	4,829	1,229	1.4%
44	Retail Trade	72,256	\$36,166	1.11	2,048	0.6%	10,143	4,152	5,736	255	0.4%
31	Manufacturing	61,237	\$76,560	1.17	-1,482	-0.5%	6,513	2,278	3,907	329	0.5%
72	Accommodation and Food Services	60,147	\$21,995	1.04	983	0.3%	11,286	4,558	6,144	585	1.0%
61	Educational Services	55,608	\$53,515	1.03	3,097	1.2%	5,540	2,360	2,854	327	0.6%
56	Administrative and Support and Waste Management and Remediation Services	46,778	\$52,296	1.15	-1,471	-0.6%	5,731	2,126	3,197	408	0.9%
92	Public Administration	45,434	\$60,860	1.44	1,034	0.5%	4,390	1,668	2,496	226	0.5%
54	Professional, Scientific, and Technical Services	35,429	\$90,201	0.73	6,157	3.9%	3,356	1,061	1,801	495	1.4%
23	Construction	35,325	\$68,994	0.89	1,977	1.2%	3,427	1,116	1,909	401	1.1%
81	Other Services (except Public Administration)	32,814	\$38,449	1.15	1,660	1.0%	4,082	1,527	2,210	345	1.1%
52	Finance and Insurance	30,790	\$86,422	1.18	686	0.5%	2,778	976	1,569	233	0.8%
48	Transportation and Warehousing	28,115	\$54,419	0.84	4,080	3.2%	3,374	1,240	1,817	317	1.1%
42	Wholesale Trade	22,871	\$87,017	0.92	2,361	2.2%	2,478	853	1,434	191	0.8%
71	Arts, Entertainment, and Recreation	11,443	\$23,572	0.82	841	1.5%	1,841	672	1,013	156	1.4%
53	Real Estate and Rental and Leasing	10,674	\$70,787	0.90	897	1.8%	1,120	452	570	98	0.9%
51	Information	8,245	\$80,218	0.64	-1,365	-3.0%	798	261	454	83	1.0%
55	Management of Companies and Enterprises	7,482	\$109,156	0.72	-2,745	-6.1%	763	236	396	131	1.7%
11	Agriculture, Forestry, Fishing and Hunting	5,701	\$45,958	0.71	-715	-2.3%	710	330	369	11	0.2%
22	Utilities	5,231	\$107,199	1.51	-988	-3.4%	425	169	287	-31	-0.6%
21	Mining, Quarrying, and Oil and Gas Extraction	1,221	\$89,768	0.50	366	7.4%	138	39	75	24	2.0%
99	Unclassified	5	\$66,036	0.01	-2	-5.8%	1	0	0	0	1.4%
Total - All Industries		667,564	\$58,260	1.00	26,689	0.8%	78,440	29,886	42,701	5,853	0.9%

Source: [JobsEQ®](#)

Data as of 2024Q4

Note: Figures may not sum due to rounding.

1. All data based upon a four-quarter moving average

Exits and transfers are approximate estimates based upon occupation separation rates.

Employment data are derived from the Quarterly Census of Employment and Wages, provided by the Bureau of Labor Statistics and imputed where necessary. Data are updated through 2024Q3 with preliminary estimates updated to 2024Q4. Forecast employment growth uses national projections adapted for regional growth patterns.

Occupation Snapshot

The largest major occupation group in the Central WIOA is Office and Administrative Support Occupations, employing 83,645 workers. The next-largest occupation groups in the region are Sales and Related Occupations (62,370 workers) and Transportation and Material Moving Occupations (60,870). High location quotients (LQs) indicate occupation groups in which a region has high concentrations of employment compared to the national average. The major groups with the largest LQs in the region are Protective Service Occupations (LQ = 1.22), Production Occupations (1.19), and Legal Occupations (1.17).

Occupation groups in the Central WIOA with the highest average wages per worker are Management Occupations (\$120,400), Legal Occupations (\$101,900), and Healthcare Practitioners and Technical Occupations (\$97,900). The unemployment rate in the region varied among the major groups from 1.4% among Legal Occupations to 9.0% among Farming, Fishing, and Forestry Occupations.

Over the next 1 year, the fastest growing occupation group in the Central WIOA is expected to be Healthcare Support Occupations with a +1.7% year-over-year rate of growth. The strongest forecast by number of jobs over this period is expected for Transportation and Material Moving Occupations (+628 jobs) and Food Preparation and Serving Related Occupations (+553). Over the same period, the highest separation demand (occupation demand due to retirements and workers moving from one occupation to another) is expected in Food Preparation and Serving Related Occupations (11,530 jobs) and Office and Administrative Support Occupations (9,365).

Central WIOA, 2024Q4¹

SOC	Occupation	Empl	Current				5-Year History			1-Year Forecast				
			Mean Ann Wages ²	LQ	Unempl	Unempl Rate	Online Job Ads ³	Empl Change	Ann %	Total Demand	Exits	Transfers	Empl Growth	Ann % Growth
43-0000	Office and Administrative Support	83,645	\$44,600	1.07	3,436	3.6%	3,146	-2,274	-0.5%	9,470	4,063	5,302	105	0.1%
41-0000	Sales and Related	62,370	\$48,100	1.08	3,736	5.2%	4,890	-362	-0.1%	8,486	3,529	4,720	237	0.4%
53-0000	Transportation and Material Moving	60,870	\$43,000	1.05	4,281	6.3%	2,888	5,864	2.0%	8,545	3,034	4,883	628	1.0%
35-0000	Food Preparation and Serving Related	58,369	\$30,000	1.07	4,284	6.8%	3,975	1,093	0.4%	12,083	4,973	6,557	553	0.9%
11-0000	Management	45,556	\$120,400	0.88	1,035	2.0%	4,314	5,825	2.8%	4,215	1,267	2,408	540	1.2%
51-0000	Production	43,066	\$48,900	1.19	2,905	6.1%	1,199	-1,965	-0.9%	4,951	1,755	3,034	163	0.4%
29-0000	Healthcare Practitioners and Technical	41,452	\$97,900	1.04	663	1.5%	7,362	4,626	2.4%	2,898	1,224	1,153	521	1.3%
25-0000	Educational Instruction and Library	35,503	\$59,100	0.98	961	2.5%	1,968	1,611	0.9%	3,360	1,460	1,657	243	0.7%
13-0000	Business and Financial Operations	35,454	\$80,800	0.83	1,260	2.8%	2,694	3,370	2.0%	3,317	1,013	1,901	404	1.1%
49-0000	Installation, Maintenance, and Repair	28,092	\$56,200	1.08	988	3.2%	2,337	964	0.7%	2,799	1,031	1,479	289	1.0%
31-0000	Healthcare Support	27,484	\$35,600	0.88	1,139	3.9%	1,602	3,569	2.8%	4,399	1,757	2,168	473	1.7%
47-0000	Construction and Extraction	26,411	\$52,200	0.89	1,764	5.9%	970	515	0.4%	2,600	854	1,436	310	1.2%
37-0000	Building and Grounds Cleaning and Maintenance	21,029	\$35,600	0.96	1,314	5.7%	1,125	-453	-0.4%	3,090	1,255	1,644	191	0.9%
39-0000	Personal Care and Service	18,110	\$35,600	1.04	1,100	5.5%	677	1,359	1.6%	3,461	1,229	2,005	228	1.3%
33-0000	Protective Service	17,676	\$47,500	1.22	728	3.9%	714	-395	-0.4%	2,028	763	1,163	102	0.6%
15-0000	Computer and Mathematical	15,700	\$97,300	0.74	621	2.9%	1,588	1,347	1.8%	1,176	357	587	232	1.5%
21-0000	Community and Social Service	12,647	\$54,500	1.02	375	2.7%	1,727	378	0.6%	1,296	490	656	150	1.2%

Central WIOA, 2024Q4¹

SOC	Occupation	Empl	Mean Ann Wages ²	Current			5-Year History			1-Year Forecast				
				LQ	Unempl	Unempl Rate	Online Job Ads ³	Empl Change	Ann %	Total Demand	Exits	Transfers	Empl Growth	Ann % Growth
17-0000	Architecture and Engineering	10,517	\$93,200	1.00	260	2.1%	1,170	434	0.8%	829	267	453	110	1.0%
27-0000	Arts, Design, Entertainment, Sports, and Media	9,574	\$60,400	0.78	441	3.8%	630	530	1.1%	1,045	390	560	95	1.0%
23-0000	Legal	6,465	\$101,900	1.17	96	1.4%	362	269	0.9%	445	161	240	44	0.7%
19-0000	Life, Physical, and Social Science	5,269	\$80,400	0.86	250	3.9%	599	628	2.6%	523	88	382	53	1.0%
45-0000	Farming, Fishing, and Forestry	2,305	\$40,700	0.60	228	9.0%	41	-244	-2.0%	354	140	211	2	0.1%
Total - All Occupations		667,564	\$58,200	1.00	31,866	4.2%	45,977	26,689	0.8%	81,429	31,099	44,600	5,729	0.9%

Source: [JobsEQ®](#)

Data as of 2024Q4 unless noted otherwise

Note: Figures may not sum due to rounding.

1. Data based on a four-quarter moving average unless noted otherwise.

2. Wage data represent the average for all Covered Employment

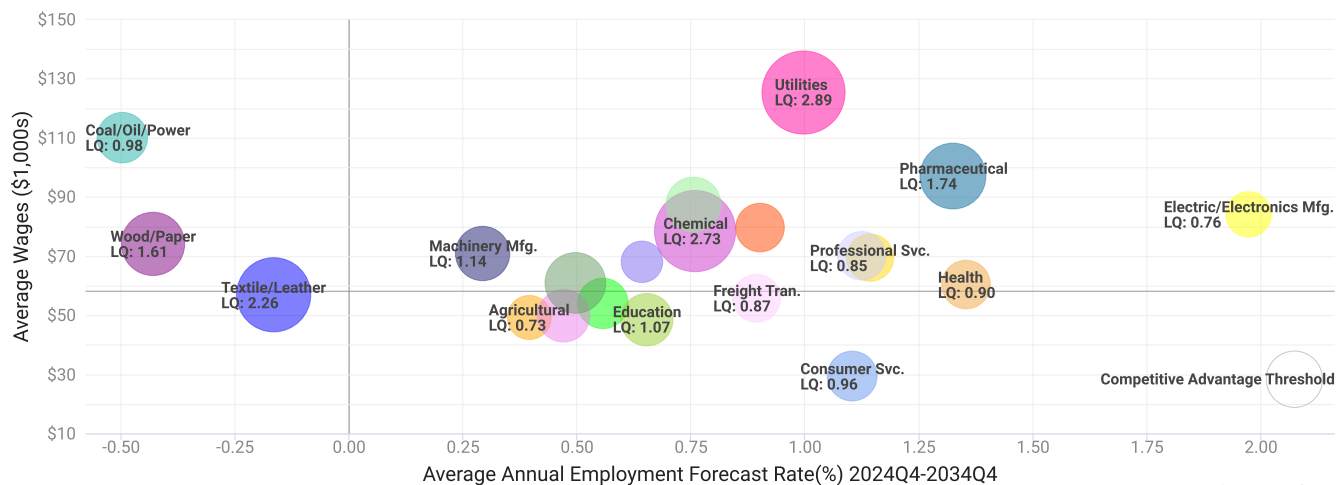
3. Data represent found online ads active within the last thirty days in the selected region. Due to alternative county-assignment algorithms, ad counts in this analytic may not match that shown in RTI (nor in the popup window ad list). Ad counts for ZCTA-based regions are estimates.

Occupation employment data are estimated via industry employment data and the estimated industry/occupation mix. Industry employment data are derived from the Quarterly Census of Employment and Wages, provided by the Bureau of Labor Statistics and currently updated through 2024Q3, imputed where necessary with preliminary estimates updated to 2024Q4. Wages by occupation are as of 2024 provided by the BLS and imputed where necessary. Forecast employment growth uses national projections from the Bureau of Labor Statistics adapted for regional growth patterns.

Industry Clusters

A cluster is a geographic concentration of interrelated industries or occupations. The industry cluster in the Central WIOA with the highest relative concentration is Utilities with a location quotient of 2.89. This cluster employs 8,947 workers in the region with an average wage of \$125,351. Employment in the Utilities cluster is projected to expand in the region about 1.0% per year over the next ten years.

Industry Clusters for Central WIOA as of 2024Q4

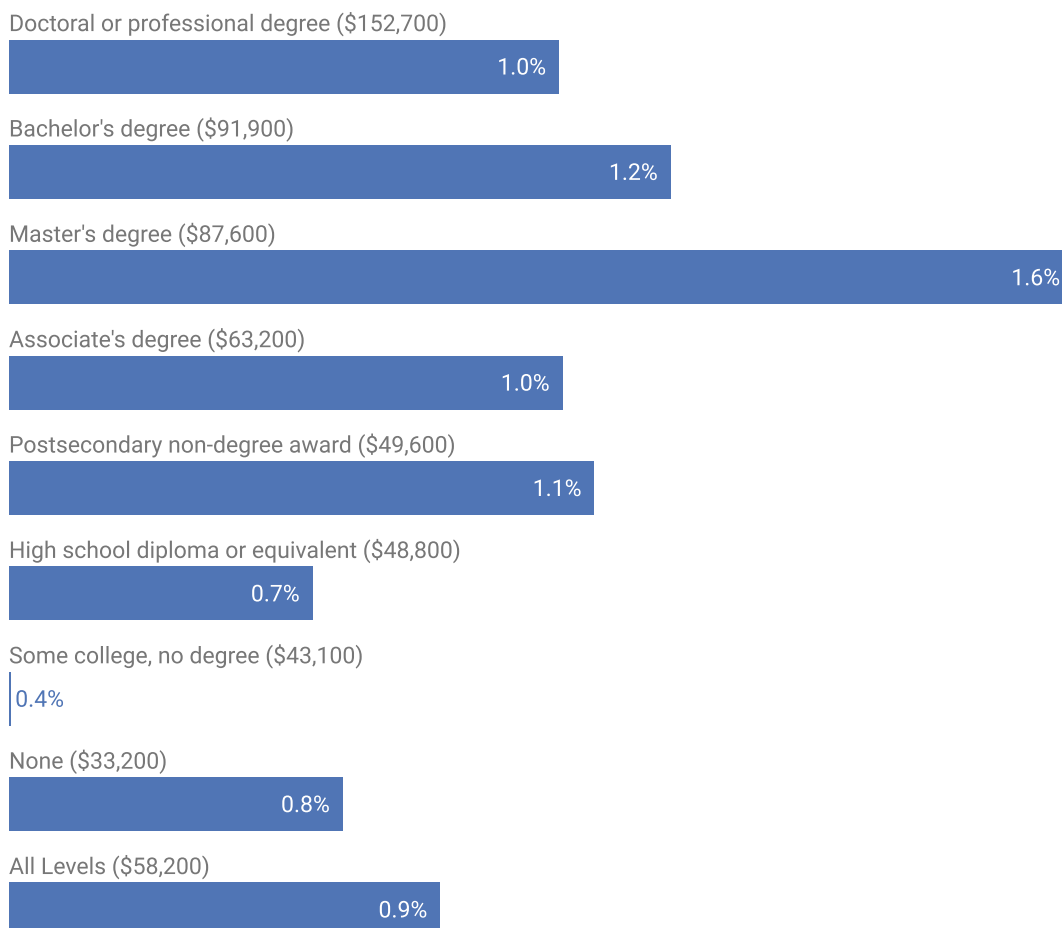


Location quotient and average wage data are derived from the Quarterly Census of Employment and Wages, provided by the Bureau of Labor Statistics, imputed where necessary, and updated through 2024Q3 with preliminary estimates updated to 2024Q4. Forecast employment growth uses national projections from the Bureau of Labor Statistics adapted for regional growth patterns.

Education Levels

Expected growth rates for occupations vary by the education and training required. While all employment in the Central WIOA is projected to grow 0.9% over the next ten years, occupations typically requiring a postgraduate degree are expected to grow 1.0% per year, those requiring a bachelor's degree are forecast to grow 1.2% per year, and occupations typically needing a 2-year degree or certificate are expected to grow 1.0% per year.

Annual Average Projected Job Growth by Education Levels

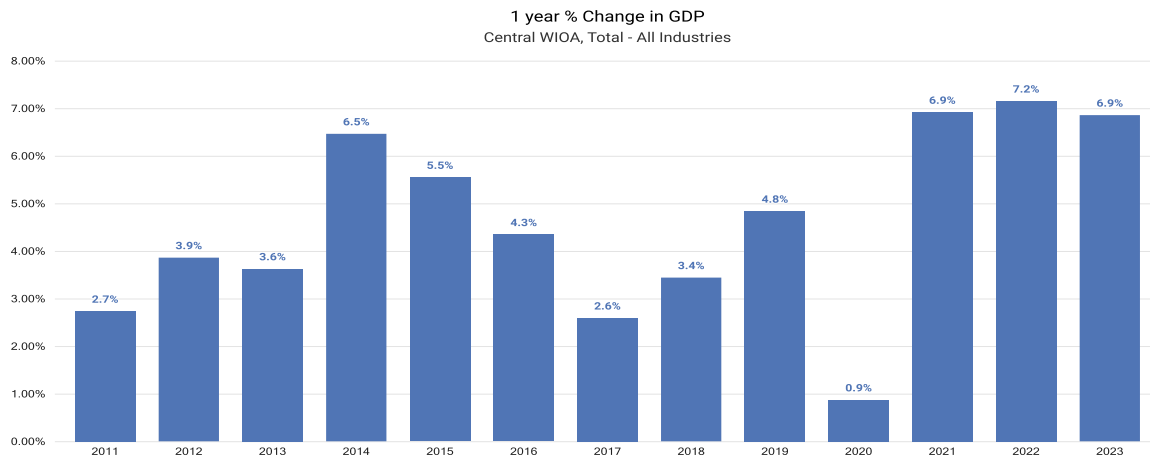


Source: JobsEQ®
Data as of 2024Q4

Employment by occupation data are estimates as of 2024Q4. Education levels of occupations are based on BLS assignments. Forecast employment growth uses national projections from the Bureau of Labor Statistics adapted for regional growth patterns.

Gross Domestic Product

Gross Domestic Product (GDP) is the total value of goods and services produced by a region. In 2023, nominal GDP in the Central WIOA expanded 6.9%. This follows growth of 7.2% in 2022. As of 2023, total GDP in the Central WIOA was \$85,438,109,000.



Gross Domestic Product data are provided by the Bureau of Economic Analysis, imputed by Chmura where necessary, updated through 2023.

Of the sectors in the Central WIOA, Real Estate and Rental and Leasing contributed the largest portion of GDP in 2023, \$10,174,242,000. The next-largest contributions came from Manufacturing (\$9,529,456,000); Health Care and Social Assistance (\$8,151,336,000); and Retail Trade (\$6,253,966,000).

GDP (in \$ millions)

Central WIOA, 2023

Real Estate and Rental and Leasing (53)

\$10,174

Manufacturing (31)

\$9,529

Health Care and Social Assistance (62)

\$8,151

Retail Trade (44)

\$6,254

Wholesale Trade (42)

\$5,787

Finance and Insurance (52)

\$5,735

Educational Services (61)

\$5,054

Public Administration (92)

\$4,947

Professional, Scientific, and Technical Services (54)

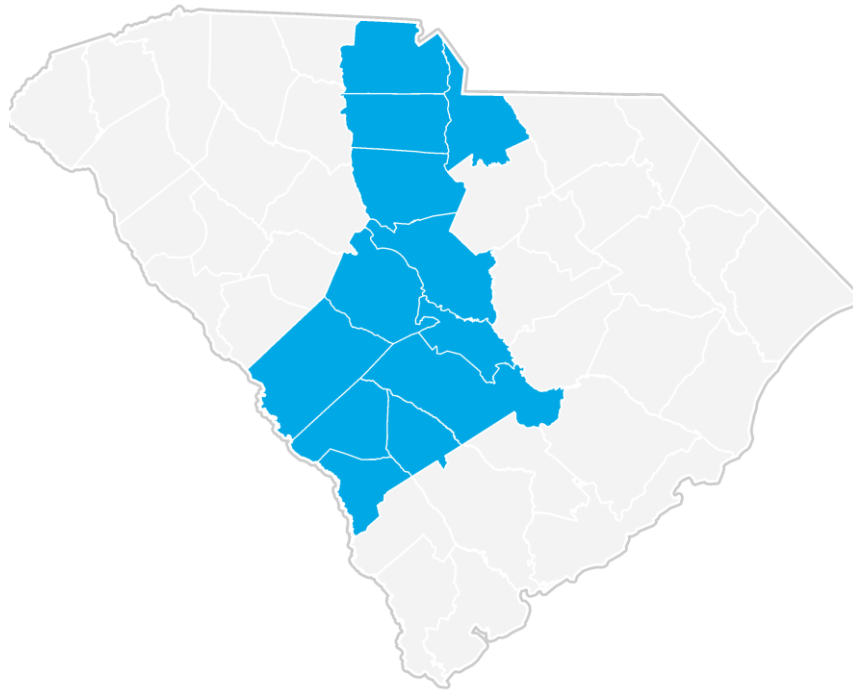
\$4,632

Construction (23)

\$4,258

Gross Domestic Product data are provided by the Bureau of Economic Analysis, imputed by Chmura where necessary, updated through 2023.

Central WIOA Regional Map



Region Definition

Central WIOA is defined as the following counties:

Aiken County, South Carolina
Allendale County, South Carolina
Bamberg County, South Carolina
Barnwell County, South Carolina
Calhoun County, South Carolina
Chester County, South Carolina

Fairfield County, South Carolina
Lancaster County, South Carolina
Lexington County, South Carolina
Orangeburg County, South Carolina
Richland County, South Carolina
York County, South Carolina

FAQ

What is a location quotient?

A location quotient (LQ) is a measurement of concentration in comparison to the nation. An LQ of 1.00 indicates a region has the same concentration of an industry (or occupation) as the nation. An LQ of 2.00 would mean the region has twice the expected employment compared to the nation and an LQ of 0.50 would mean the region has half the expected employment in comparison to the nation.

What is separation demand?

Separation demand is the number of jobs required due to separations—labor force exits (including retirements) and turnover resulting from workers moving from one occupation into another. Note that separation demand does not include all turnover—it does not include when workers stay in the same occupation but switch employers. The total projected demand for an occupation is the sum of the separation demand and the growth demand (which is the increase or decrease of jobs in an occupation expected due to expansion or contraction of the overall number of jobs in that occupation).

What is a cluster?

A cluster is a geographic concentration of interrelated industries or occupations. If a regional cluster has a location quotient of 1.25 or greater, the region is considered to possess a competitive advantage in that cluster.

What is the difference between industry wages and occupation wages?

Industry wages and occupation wages are estimated via separate data sets, often the time periods being reported do not align, and wages are defined slightly differently in the two systems (for example, certain bonuses are included in the industry wages but not the occupation wages). It is therefore common that estimates of the average industry wages and average occupation wages in a region do not match exactly.

What is NAICS?

The North American Industry Classification System (NAICS) is used to classify business establishments according to the type of economic activity. The NAICS Code comprises six levels, from the “all industry” level to the 6-digit level. The first two digits define the top level category, known as the “sector,” which is the level examined in this report.

What is SOC?

The Standard Occupational Classification system (SOC) is used to classify workers into occupational categories. All workers are classified into one of over 804 occupations according to their occupational definition. To facilitate classification, occupations are combined to form 22 major groups, 95 minor groups, and 452 occupation groups. Each occupation group includes detailed occupations requiring similar job duties, skills, education, or experience.

About This Report

This report and all data herein were produced by JobsEQ®, a product of Chmura Economics & Analytics. The information contained herein was obtained from sources we believe to be reliable. However, we cannot guarantee its accuracy and completeness.